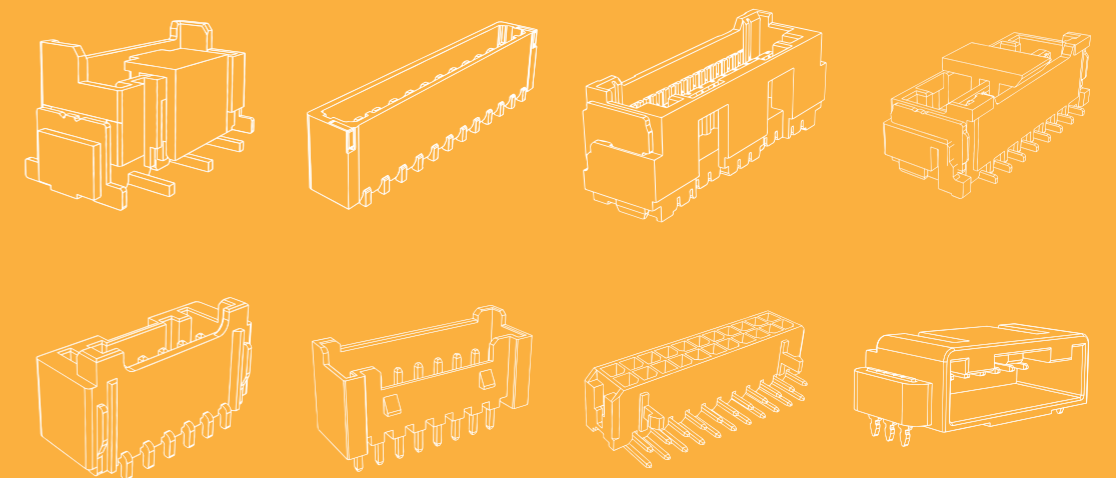




AUTOMOTIVE CONNECTORS




 **Shenzhen Forman Precision Industry Co., Ltd.**

 0086-755-81738901 / 0086-755-81738902

 info@fpiconn.com / info@sz-fpi.com

 <https://fpiconn.com/> <https://sz-fpi.com/>

 Building K, No. 2, Longshan Eighth Road, Luotian Community,
Yanluo Street, Baoan District, Shenzhen City, GD, China.



fpiconn.com



sz-fpi.com



“IF THERE IS A WAY
TO DO IT BETTER,
FIND IT”

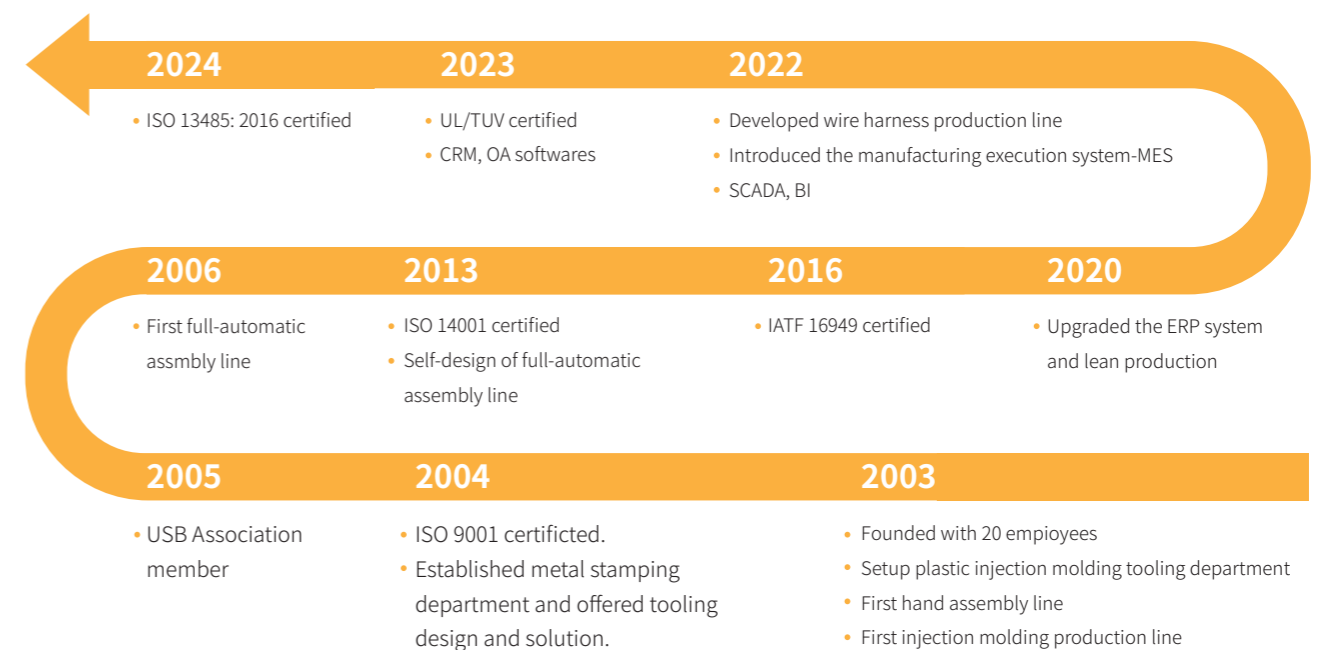
By: Thomas Alva Edison

■ ABOUT US >>

Shenzhen Forman Precision Industry Co., LTD is a leading and experienced manufacturing vendor, dedicated to the development of metal and plastic parts. For over 20 years, we have specialized in the design and production of connectors and cables assembly. Our market spans the automotive, new energy, industrial automation, and medical devices sectors.

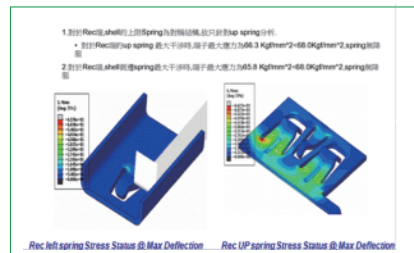
We are certified by ISO 9001, ISO 14001, IATF 16949, and ISO 13485, and we are also a member of the USB Association, with UL and TUV certifications.

Our goal is to provide a unique service experience and add value for our customers through end-to-end management. We take pride in our reputation for being fast, flexible, and customer-focused.

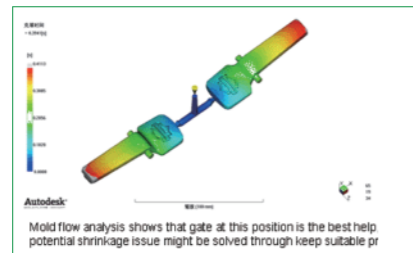


OUR ADVANTAGES

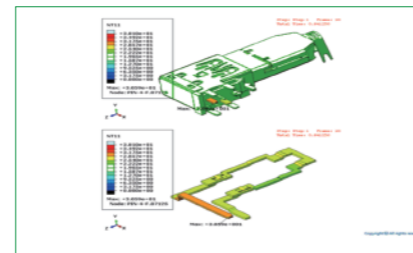
The Experienced R&D Team and CAE Software Support



Simulation Result- Stress Status@ Shell Spring



Mold Flow Simulation Test



Current Rating Simulation Test

The Modernization One-stop Production Process



Wire EDM Center



Wire EDM Center



Stamping Workshop



Plastic Injection Workshop



Wire Harness Workshop



Warehouse



Wire Harness Workshop



CCD Imaging Analysis



Electrometric Measurement

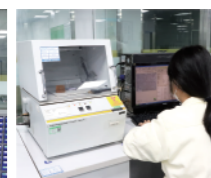


Automatic Packing

We Strictly Implement the Process of Product Quality



Keyence Tester



X-Ray Plating Thickness Tester



X-Ray Scenograph



Halogen Testing Machine



Constant Temperature & Humidity Tester



Thermal Shock Test Chamber

Serve customers and create value

CERTIFICATE



IATF 16949



ISO 13485



ISO 14001



ISO 9001



TUV



UL

Wire To Board Connectors

Over 20 years experience

Customizable, Quality assurance, Professional production

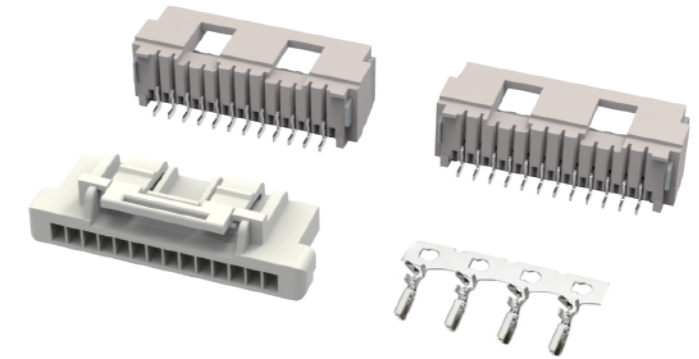


AW15151 WIRE TO BOARD

1.50mm Pitch

SPECIFICATION

- Current Rating: 2.0AMP
- Insulation Resistance: 500MΩ MIN.
- Contact Resistance: 20mΩ MAX.
- Withstanding Voltage: AC 500V MIN.
- Operating Temperature: -40°C to +125°C
- Contact Material: Copper Alloy
- Contact Plating: Gold or Tin over Nickel
- Wire Range: AWG# 24-26
- Poles : 02-15

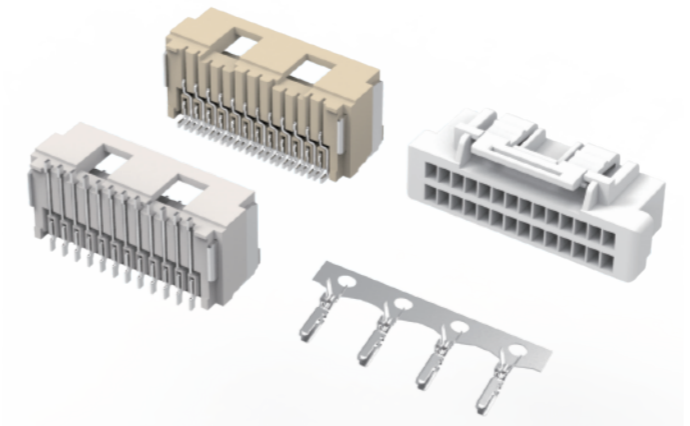


AW15152 WIRE TO BOARD

1.50mm Pitch

SPECIFICATION

- Current Rating: 2.0AMP
- Insulation Resistance: 500MΩ MIN.
- Contact Resistance: 20mΩ MAX.
- Withstanding Voltage: AC 500V MIN.
- Operating Temperature: -40°C to +125°C
- Contact Material: Copper Alloy
- Contact Plating: Gold or Tin over Nickel
- Wire Range: AWG# 24-26
- Poles : 2*02-2*14

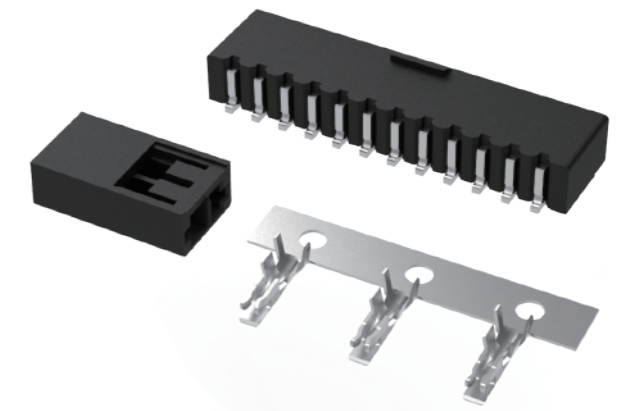


AW18041 WIRE TO BOARD

1.80mm Pitch

SPECIFICATION

- Current Rating: 2.5AMP
- Insulation Resistance: 1000MΩ MIN.
- Contact Resistance: 20mΩ MAX.
- Withstanding Voltage: AC 500V MIN.
- Operating Temperature: -40°C to +125°C
- Contact Material: Copper Alloy
- Contact Plating: Gold or Tin over Nickel
- Wire Range: AWG# 24-26
- Poles : 02-12

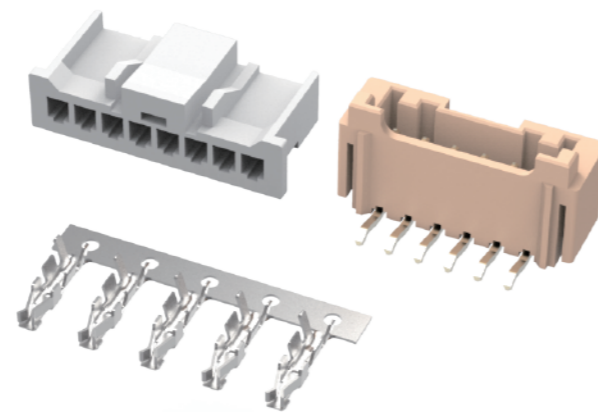


AW20001 WIRE TO BOARD

2.00mm Pitch

SPECIFICATION

- Current Rating: 3.0AMP
- Insulation Resistance: 1000MΩ MIN.
- Contact Resistance: 20mΩ MAX.
- Withstanding Voltage: AC 800V MIN.
- Operating Temperature: -40°C to +125°C
- Contact Material: Copper Alloy
- Contact Plating: Gold or Tin over Nickel
- Wire Range: AWG# 20-28
- Poles : 02-16

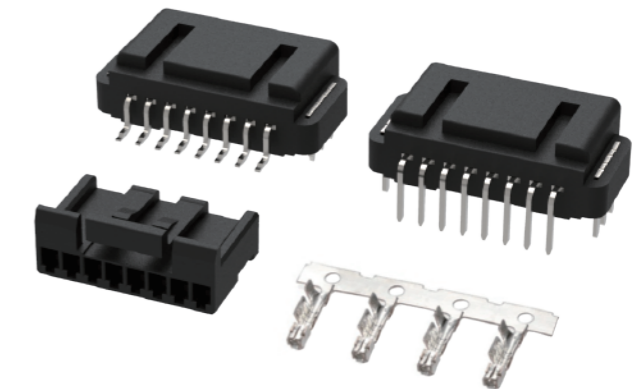


AW20101 WIRE TO BOARD

2.00mm Pitch

SPECIFICATION

- Current Rating: 3.0AMP
- Insulation Resistance: 1000MΩ MIN.
- Contact Resistance: 20mΩ MAX.
- Withstanding Voltage: AC 500V MIN.
- Operating Temperature: -40°C to +125°C
- Contact Material: Copper Alloy
- Contact Plating: Gold or Tin over Nickel
- Wire Range: AWG# 20-24
- Poles : 02-14

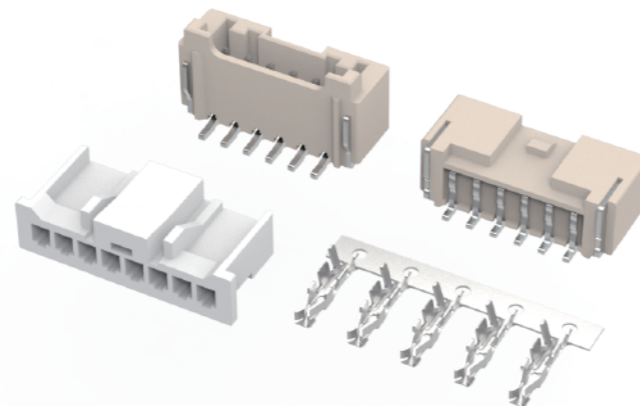


AW20003 WIRE TO BOARD

2.00mm Pitch

SPECIFICATION

- Current Rating: 3.0AMP
- Insulation Resistance: 1000MΩ MIN.
- Contact Resistance: 20mΩ MAX.
- Withstanding Voltage: AC 800V MIN.
- Operating Temperature: -40°C to +125°C
- Contact Material: Copper Alloy
- Contact Plating: Gold or Tin over Nickel
- Wire Range: AWG# 20-28
- Poles : 02-16

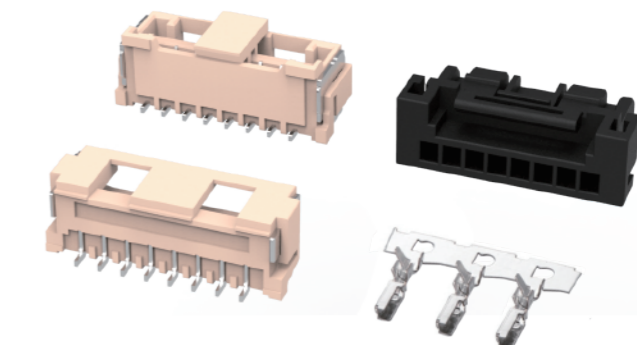


AW20231 WIRE TO BOARD

2.00mm Pitch

SPECIFICATION

- Current Rating: 3.0AMP
- Insulation Resistance: 1000MΩ MIN.
- Contact Resistance: 20mΩ MAX.
- Withstanding Voltage: AC 500V MIN.
- Operating Temperature: -40°C to +125°C
- Contact Material: Copper Alloy
- Contact Plating: Gold or Tin over Nickel
- Wire Range: AWG# 22-26
- Poles : 02-15

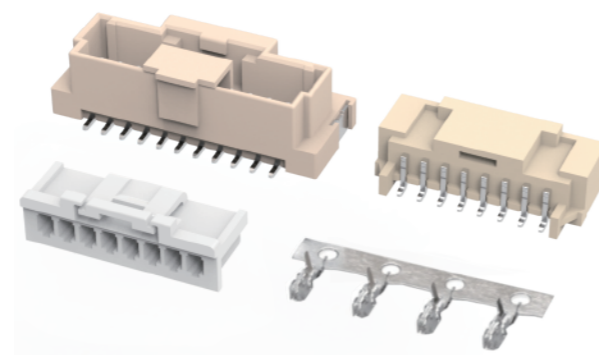


AW20081 WIRE TO BOARD

2.00mm Pitch

SPECIFICATION

- Current Rating: 3.0AMP
- Insulation Resistance: 1000MΩ MIN.
- Contact Resistance: 20mΩ MAX.
- Withstanding Voltage: AC 500V MIN.
- Operating Temperature: -40°C to +125°C
- Contact Material: Copper Alloy
- Contact Plating: Gold or Tin over Nickel
- Wire Range: AWG# 20-26
- Poles : 02-15

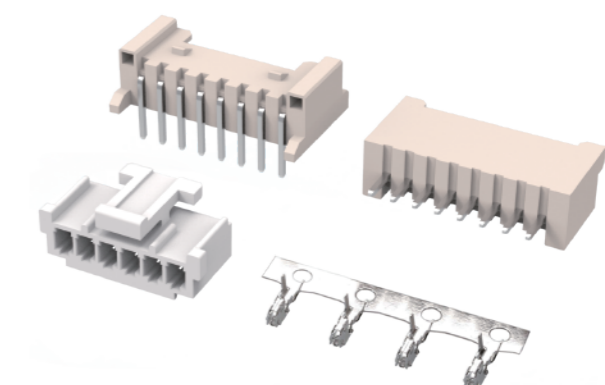


AW35351 WIRE TO BOARD

2.00mm Pitch

SPECIFICATION

- Current Rating: 2.0AMP
- Insulation Resistance: 1000MΩ MIN.
- Contact Resistance: 20mΩ MAX.
- Withstanding Voltage: AC 1000V MIN.
- Operating Temperature: -40°C to +125°C
- Contact Material: Copper Alloy
- Contact Plating: Gold or Tin over Nickel
- Wire Range: AWG# 22-26
- Poles : 02-15

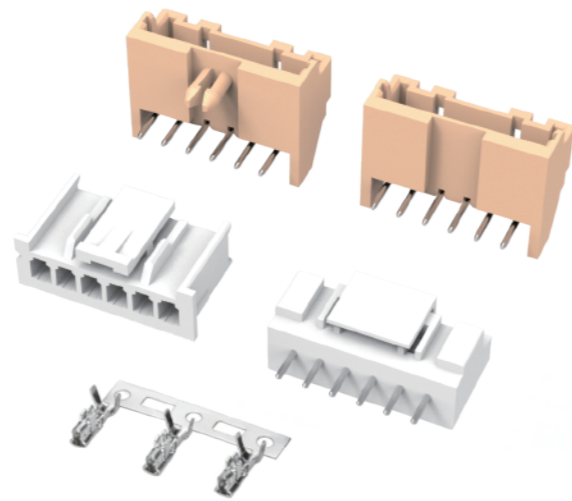


AW25081 WIRE TO BOARD

2.50mm Pitch

SPECIFICATION

- Current Rating: 3.0AMP
- Insulation Resistance: 1000MΩ MIN.
- Contact Resistance: 20mΩ MAX.
- Withstanding Voltage: AC 1000V MIN.
- Operating Temperature: -40°C to +125°C
- Contact Material: Copper Alloy
- Contact Plating: Gold or Tin over Nickel
- Wire Range: AWG# 22-26
- Poles : 02-15

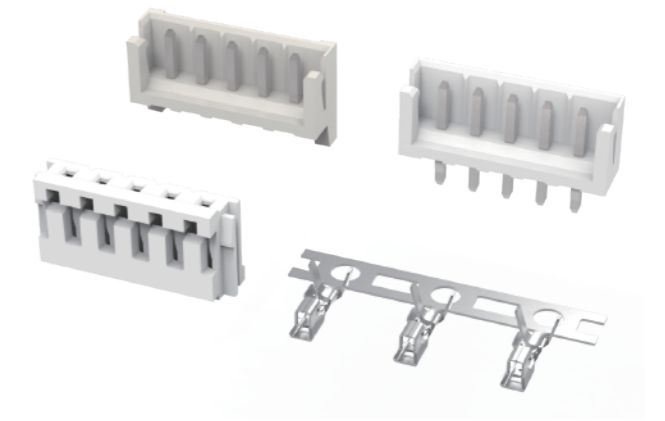


AW25811 WIRE TO BOARD

2.50mm Pitch

SPECIFICATION

- Current Rating: 3.0AMP
- Insulation Resistance: 1000MΩ MIN.
- Contact Resistance: 20mΩ MAX.
- Withstanding Voltage: AC 500V MIN.
- Operating Temperature: -40°C to +125°C
- Contact Material: Copper Alloy
- Contact Plating: Gold or Tin over Nickel
- Wire Range: AWG# 22-26
- Poles : 02-15

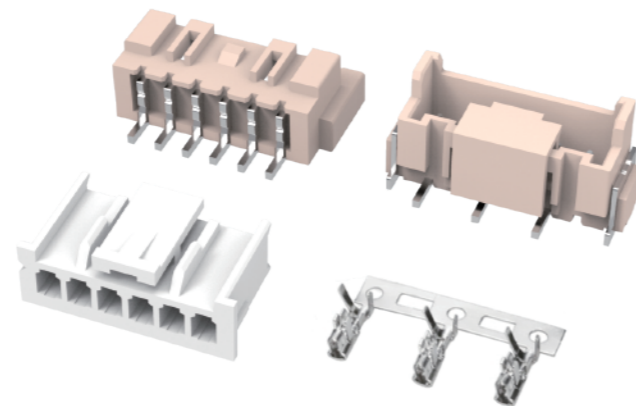


AW25083 WIRE TO BOARD

2.50mm Pitch

SPECIFICATION

- Current Rating: 3.0AMP
- Insulation Resistance: 1000MΩ MIN.
- Contact Resistance: 20mΩ MAX.
- Withstanding Voltage: AC 1000V MIN.
- Operating Temperature: -40°C to +125°C
- Contact Material: Copper Alloy
- Contact Plating: Gold or Tin over Nickel
- Wire Range: AWG# 22-26
- Poles : 02-15

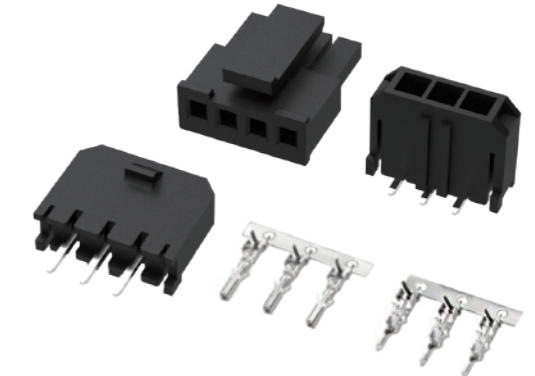


AW30251 WIRE TO BOARD

3.00mm Pitch

SPECIFICATION

- Current Rating: 5.0AMP
- Insulation Resistance: 1000MΩ MIN.
- Contact Resistance: 210mΩ MAX.
- Withstanding Voltage: AC 1000V MIN.
- Operating Temperature: -40°C to +125°C
- Contact Material: Copper Alloy
- Contact Plating: Gold or Tin over Nickel
- Wire Range: AWG# 20-30
- Poles : 02-15

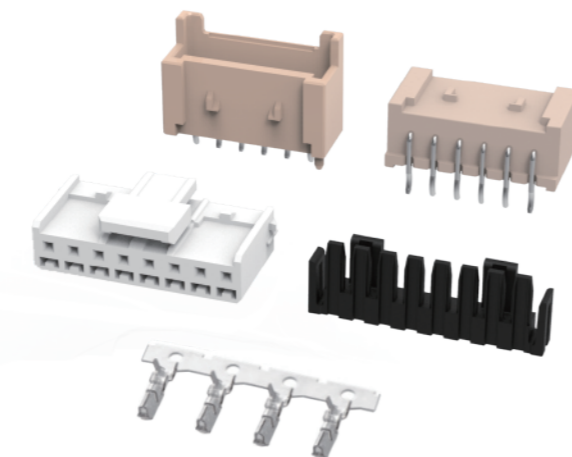


AW25121 WIRE TO BOARD

2.50mm Pitch

SPECIFICATION

- Current Rating: 3.0AMP
- Insulation Resistance: 1000MΩ MIN.
- Contact Resistance: 20mΩ MAX.
- Withstanding Voltage: AC 1000V MIN.
- Operating Temperature: -40°C to +125°C
- Contact Material: Copper Alloy
- Contact Plating: Gold or Tin over Nickel
- Wire Range: AWG# 22-26
- Poles : 02-15

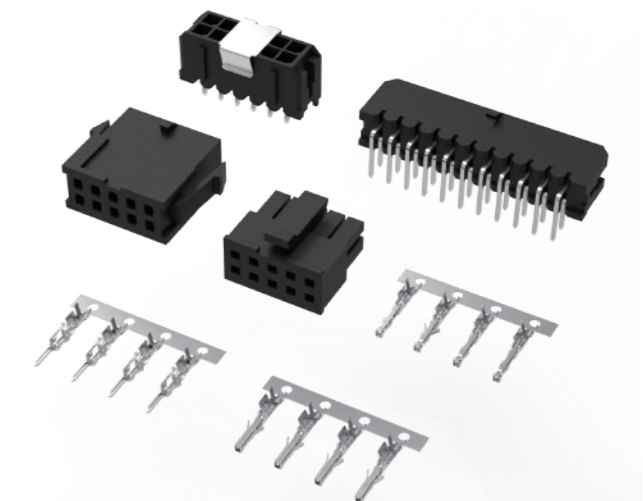


AW30252 WIRE TO BOARD

3.00mm Pitch

SPECIFICATION

- Current Rating: 5.0AMP
- Insulation Resistance: 1000MΩ MIN.
- Contact Resistance: 10mΩ MAX.
- Withstanding Voltage: AC 1000V MIN.
- Operating Temperature: -40°C to +125°C
- Contact Material: Copper Alloy
- Contact Plating: Gold or Tin over Nickel
- Wire Range: AWG# 20-30
- Poles : 2*01-2*12

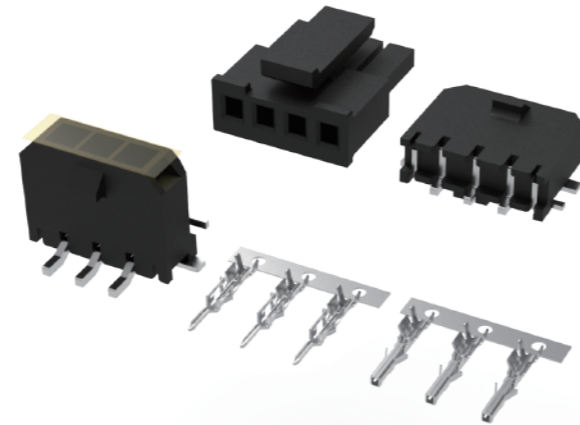


AW30253 WIRE TO BOARD

3.00mm Pitch

SPECIFICATION

- Current Rating: 5.0AMP
- Insulation Resistance: 1000MΩ MIN.
- Contact Resistance: 210mΩ MAX.
- Withstanding Voltage: AC 1000V MIN.
- Operating Temperature: -40°C to +125°C
- Contact Material: Copper Alloy
- Contact Plating: Gold or Tin over Nickel
- Wire Range: AWG# 20-30
- Poles : 02-15

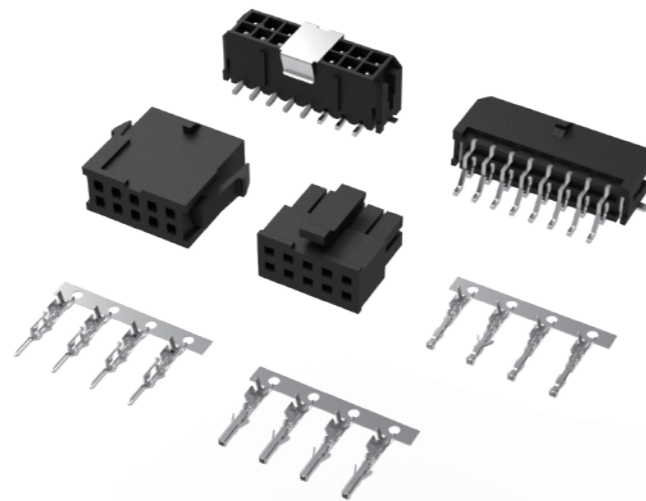


AW30254 WIRE TO BOARD

3.00mm Pitch

SPECIFICATION

- Current Rating: 5.0AMP
- Insulation Resistance: 1000MΩ MIN.
- Contact Resistance: 10mΩ MAX.
- Withstanding Voltage: AC 1000V MIN.
- Operating Temperature: -40°C to +125°C
- Contact Material: Copper Alloy
- Contact Plating: Gold or Tin over Nickel
- Wire Range: AWG# 20-30
- Poles : 2*01-2*12



“STRIVING FOR PERFECTION
IN EVERY THINGS
YOU DO”

By: Sir Henry Royce